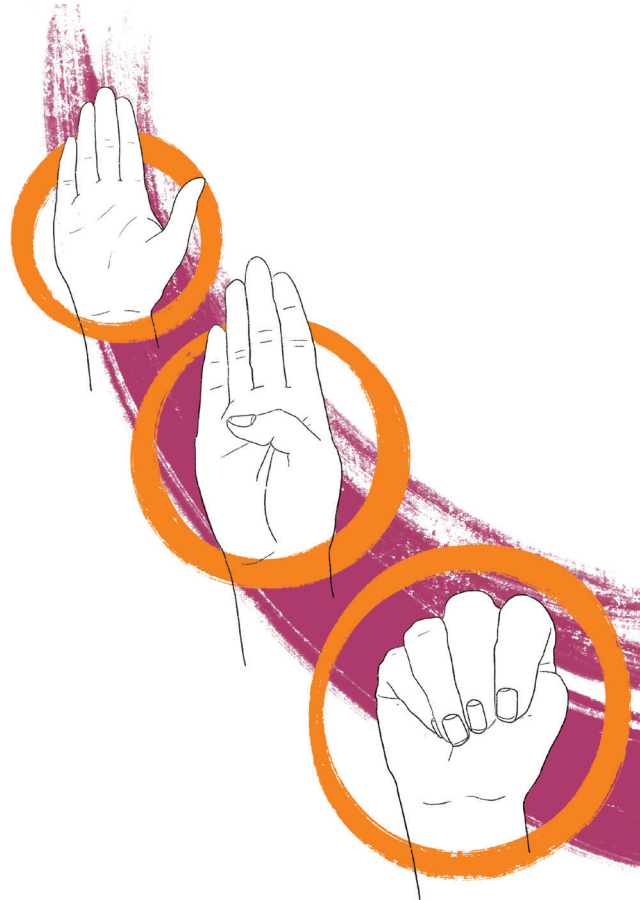


District Committee

Municipal Office for Women's and
Gender Equality

Pay attention to this hand signal:

It is a distress signal in cases of domestic violence.



06421 161516 Women Helping Women e.V. Counseling and intervention center
against domestic violence

06421 14830 Women's Shelter
info@frauenhaus-marburg.de
Accommodation and support for women affected by domestic violence and their children

06421 21438 Women's Emergency Hotline Marburg e.V.
mail@frauennotruf-marburg.de
Specialized counseling center for sexualized violence in adulthood, rape, sexual harassment (in the workplace), stalking, (threatened) forced marriage, violence against LGBT*IQ

06421 14466 Wildwasser Marburg e.V.
info@wildwasser-marburg.de
Specialized counseling center for sexualized violence in childhood and adolescence

06421 8891609 Wendo Marburg e.V.
info@wendo-marburg.de
Courses, seminars, and workshops on self-assertion, self-defense, and violence prevention for women and girls

06421 3093299 WEISSER RING e.V.
0151 55164633
marburg-biedenkopf@mail.weisser-ring.de
Advice and support for victims of crimes and those threatened by violence

06421 67119 Child Protection Association Marburg e.V.
beratung@kinderschutzbund-marburg.de
Counseling center for violence in the family

Nationwide:

0800 1239900 National Hotline
beratung@maennerhilfetelefon.de
for Violence Against Men

08000 116-016 National Hotline
for Violence Against Women

www.hilfetelefon.de
Online counseling via email or chat
Nationwide free multilingual counseling,
available 24 hours a day, 365 days a year

Imprint

District Committee

Municipal Office for Women's and Gender Equality
District of Marburg-Biedenkopf
Im Lichtenholz 60.
35043 Marburg
06421 405-1311
kommgleichstellung@marburg-biedenkopf.de
<https://www.marburg-biedenkopf.de/gleichstellung>
Flyer-Design:
Illustration: Aenne Bittner
Graphic Design: Katrin Nestrojil

No to Violence



Information,
advisory, and
support services
in the district of Marburg-Biedenkopf

Advisory and support services in the district of Marburg-Biedenkopf

06421 64523
mail@
aids-hilfe-marburg.de

AIDS-HELP Marburg e.V.
Support services, advisory services, educational work, and networking (LSBT*IQ network office)

06421 8899810
stop@
juko-marburg.de
gewaltberatung@juko-marburg.de

JUKO Marburg e.V.
STOP-Training: Offender training in the area of domestic violence
WeGe Counseling Center - Ways out of Violence:
Counseling service on violence

06428 1035
beratung@
lok-stadtallendorf.de

LOK Counseling Center
Sexual and pregnancy counseling center
Psychosocial contact and counseling center

06421 14480
info@skf-marburg.de

SkF Counseling Center neu:haus
Pregnancy and family counseling center

06421 21800
marburg@
profamilia.de

Pro Familia
Pregnancy conflict counseling, partnership counseling, family law advice, separation counseling

06421 3800420
erziehungsberatung@
marburg-stadt.de

Parenting-, marriage-, family, and life counseling
of the City of Marburg

06461 793120
06428 921872
erziehungsberatung@
marburg-biedenkopf.de

Parenting-, marriage-, family-, and life counseling of the district
Counseling centers in Biedenkopf and Stadtallendorf

What can I do if I am affected by violence?

Leave the situation

Call the police emergency number: 110

Seek support and help from counseling centers

Find confide in someone

Violence in public:

Directly address bystanders and ask for help

Important:

The victim is never to blame. The perpetrator holds responsibility. Violence is never acceptable!

How can I help if I suspect someone is experiencing domestic violence?

Show willingness to help

Be patient, do not accuse the victim, and show understanding

Inform about support and counseling centers and encourage the victim to use them

Offer shelter or childcare

If you are present during an acute situation:
Inform the police or youth welfare office

How can I help if I witness violence in public?

Do not walk away

Do not wait for others to react

Bring the victim over to you

Intervene, but be mindful of your own safety!

If escalation seems likely, call the police emergency number: 110

In cases of verbal violence (even inappropriate comments), support the victim

State that what is happening is not okay

Seek support and help from counseling centers

Further information
available online:

<http://www.marburg-biedenkopf.de/gleichstellung>

