

## What we do

From education through public health to social work: these and countless other tasks of the District Administration are executed by various divisions, administrative departments and owner-operated municipal enterprises.

In recent years the administration has undergone significant structural changes. Several smaller administrative bodies have been merged into larger divisions. The KreisJobCenter (district job centre) was established in 2005 as an independent division with its own area of responsibility.



The administrative district office as a federal state authority nowadays only exists in a few areas, for example in the supervision of local authorities.

Since municipalisation in 2005 the staff as well as the tasks of the administrative district office fall under the responsibility of the district parliament.

## The Region

**Total area:** 1,262.37 km<sup>2</sup>

**Agricultural land:** 43.4 %

**Forest area:** 40.9 %

**Water:** 1.1 %

**Buildings and undeveloped land:** 6.5 %

**Transportation area:** 6.4 %

**Other:** 0.5 %

**Recreational area:** 0.7 %

**Industrial area:** 0.5 %

**Highest Point:** The *Sackpfeife* north of Biedenkopf with an elevation of 674 m above sea level. The mountain's peak is located outside the district boundary

**Lowest point:** Near Sicherthausen in the south of the district with an elevation of 168 m above sea level

**Rivers:** Lahn, Ohm, Salzböde, Perf, Dautphe, Wetschaft, Wohra, Allna, Zwestera.

**Average annual temperature:** 6–7 °C in the Hinterland and 8–9 °C in the Marburg area

**Average annual rainfall:** 850–1,000 mm in the Hinterland and 600–700 mm in the Marburg area.



### Transportation:

Road networks  
(as of June 2019):  
District roads: 372 km  
State roads: 376 km  
Federal roads: 209 km

Vehicles  
(as of 12/06/2019):  
Vehicles total: 194,674  
– Passenger cars: 140,682  
– Motorcycles: 13,265  
– Lorries: 7,633

### Tourism

(as of 31/12/2018):

Certified tourist communities: 7  
– Kneipp-spas: 1  
– Climatic health resorts: 1  
– State-approved health resorts: 5  
Hotels/Guest houses: 113  
Bed capacity: 5,175  
Overnight stays (total): 692,920  
Hiking trails: 499 km  
Cycling routes: 550 km

## Demographics

Inhabitants whose principal place of residence is in the towns and municipalities of the District Marburg-Biedenkopf:

Marburg	75.979	Lahntal	7.009
Stadtlendorf	21.556	Breidenbach	6.800
Kirchhain	16.296	Cölbe	6.693
Biedenkopf	13.627	Lohra	5.417
Gladenbach	12.293	Amöneburg	5.130
Dautphetal	11.492	Rauschenberg	4.400
Neustadt	9.367	Fronhausen	4.114
Ebsdorfergrund	8.873	Steffenberg	4.006
Wetter	8.735	Angelburg	3.572
Bad Endbach	7.964	Münchhausen	3.293
Weimar	7.045	Wohratal	2.204

As of 30/06/2018

On 3 June 2018 a total of 245,865 people were living in the District Marburg-Biedenkopf. In 1993 the total population of the district was 248,042 people and in 1985 the total population was 236,780 people. When the district of Marburg-Biedenkopf was constituted in 1974, 232,632 residents were counted.

### Partnerships:

The district of Marburg-Biedenkopf has official partnerships with the residential area of Charlottenburg-Wilmersdorf in Berlin and the districts of Kościerzyna in Poland and Huntingdonshire in Great Britain. Friendly contact is also maintained with the German districts Nordsachsen (Saxony), Rendsburg-Eckernförde (Schleswig-Holstein) and the Wartburgkreis (Thuringia), as well as with the municipality Lüssen (South Tyrol, Italy).



Charlottenburg-Wilmersdorf/Kościerzyna/Lüssen  
(Photos: Charlottenburg-Wilmersdorf district/District of Kościerzyna/Municipality of Lüssen)



## Kreisausschuss

## About us



Marburg-Biedenkopf –

My district

Published by: Kreisausschuss Marburg-Biedenkopf  
Editorial Staff: Stephan Schienbein, Carmen Strube  
Layout: Florian Cirkel, Carmen Strube  
Translation: Florian Cirkel

Photo Credits: Landkreis Marburg-Biedenkopf  
(if not explicitly stated otherwise);  
Portrait Kirsten Fründt: Georg Kronenberg

Marburg, September 2019



## At a Glance



Marburg-Biedenkopf is one of 21 districts in Hesse. It belongs to the administrative region of Giessen in Middle Hesse and comprises 22 towns and villages. Marburg, the largest town and the only major centre in the district, has a rich history. It is also the site of the Philipps University of Marburg, founded in 1527 by Landgrave

Philipp the Magnanimous as the first Protestant university.

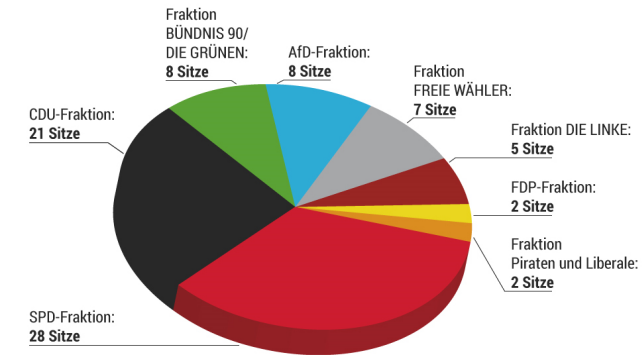
The district in its current form only exists since 1974. Its forerunners include, since 1821, the districts of Gladenbach, Marburg, Kirchhain and Battenberg. Following various structural changes, the administrative reform of 1974 unified the separate districts of Marburg and Biedenkopf to form the district Marburg-Biedenkopf. In the process, Marburg lost its status as an independent city, granted in 1929, and was integrated into the district while retaining a number of special privileges.

A landscape with low mountain ranges and traditional half-timbered houses, historical villages as well as modern communities, makes up the charm of Marburg-Biedenkopf. The *Burgwald*, the *Gladenbacher Bergland*, the *Amöneberger Becken* or the *Lahntal* offer a variety of sights with historico-cultural, artistic, and folkloric significance. Marburg-Biedenkopf has also established itself as a centre of research, industry and the service sectors, with an important role played by the healthcare industry.

Economy and population both benefit from the districtwide broadband internet which Marburg-Biedenkopf realized in collaboration with its towns and municipalities as one of the first districts in Germany.

## Political Bodies

The District Parliament is the highest political body in the district and comprises 81 elected deputies. It was last elected in March 2016.



The task of the District Parliament is to make fundamental decisions and to supervise the District Committee and the District Administration.

The District Parliament further elects five expert panels, comprising 15 deputies each, which prepare resolutions and offer general support. The line-up of these expert panels corresponds to the numeral strength of the parties in the District Parliament.



## Political Bodies

The District Committee is the governing body that deals with current administrative affairs. It prepares resolutions for the District Parliament and creates commissions for the execution of specific tasks. The Committee consists of 14 voluntary councillors elected by the District Parliament and two full-time members.



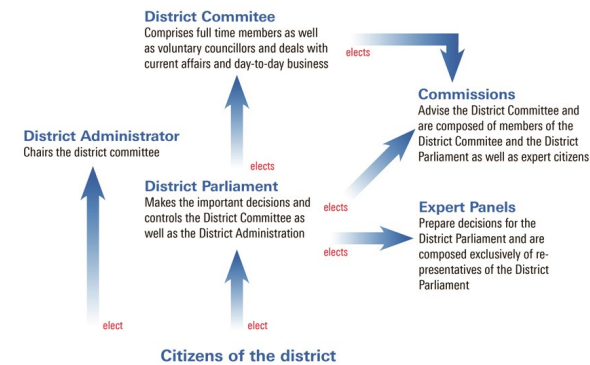
**Kirsten Fründt**  
Landrätin

**Marian Zachow**  
Erster Kreisbeigeordneter

The *Landrätin* (District Administrator) and *Erster Kreisbeigeordneter* (First Councillor) are full-time members of the District Committee. Each is responsible for one department of the District Administration composed, in turn, of various divisions and administrative departments.

Kirsten Fründt (SPD), the *Landrätin* as of 1 February 2014, was elected directly by the citizens of the district. Marian Zachow (CDU) has been *Erster Kreisbeigeordneter* since 12 June 2014. He was elected by the District Parliament.

### Modes of election



### How to reach us:

Central Office in Marburg  
Im Lichtenholz 60, 35043 Marburg  
Telefon: +49 6421 405-0; Fax: +49 6421 405-1500  
E-Mail: [landkreis@marburg-biedenkopf.de](mailto:landkreis@marburg-biedenkopf.de)  
[www.facebook.com/landkreis.marburg.biedenkopf](http://www.facebook.com/landkreis.marburg.biedenkopf)  
Internet: [www.marburg-biedenkopf.de](http://www.marburg-biedenkopf.de)



## External Branches

The seat of the District Administration is located in Marburg-Cappel. There are also several external branches:



**Marburg, Bismarckstraße 16 b**  
Early Childhood and Family Division  
Division of Local Public Transportation

**Marburg, Hermann-Jacobsohn-Weg 1**  
Division for Environment, Rural Districts and Consumer Protection  
Division for Regional Development  
Division House of Education incl. Adult Education Center



**Marburg, Schwanallee 23**  
Division for Health (Public Health Office)



**Marburg, Raiffeisenstraße 6**  
Division for Labour and Integration  
Municipal Job Center (KreisJobCenter)



**Biedenkopf, Kiesackerstraße 12**  
Regional Job Center Biedenkopf  
Division for Participation and Migrant Social Work  
Office for Vehicle Registration  
Division for Families, Youth and Social Affairs  
Adult Education Center



**Stadtlendorf, Niederrheinische Straße 3**  
Regional Job Center Stadtlendorf



**Stadtlendorf, Marktstraße**  
Office for Integration